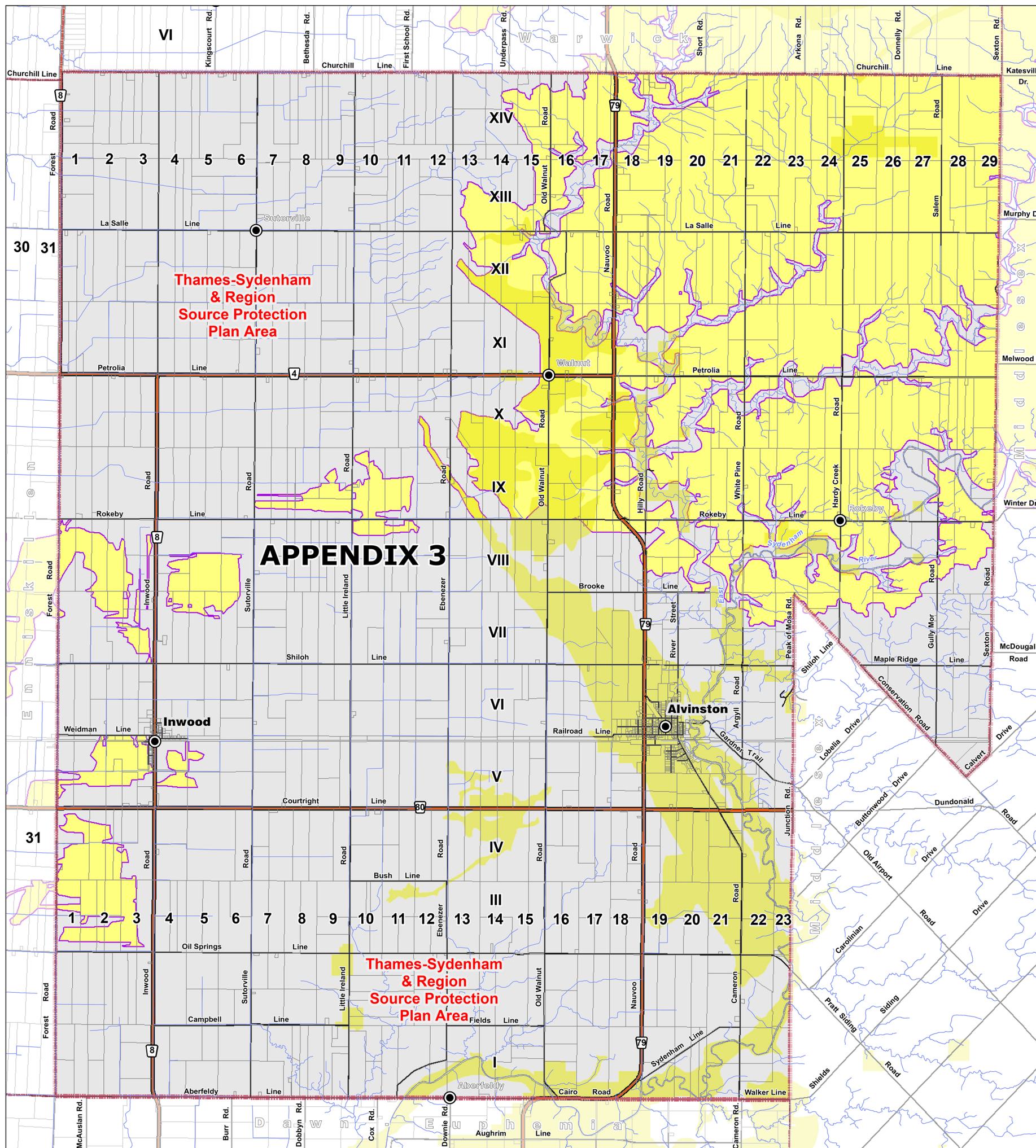


# Municipality of Brooke-Alvinston OFFICIAL PLAN APPENDIX 3 Source Protection Plans



## LEGEND

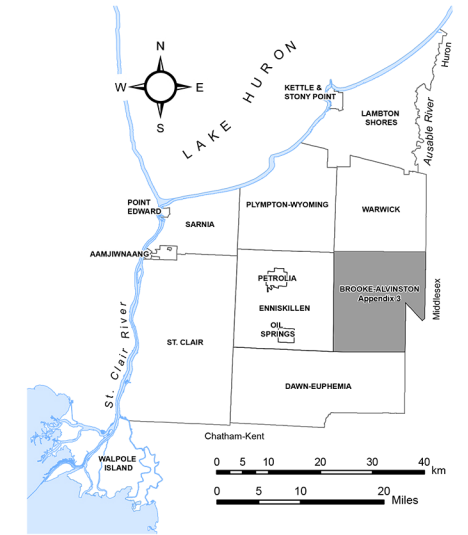
- Assessment Parcels
- Rivers - Streams - Drainage
- Roads County Roads
- Municipal Boundary
- Waterbodies

## Thematic Legend

### Areas of LOW to MODERATE Drinking Water Threat :

- HVA - (Highly Vulnerable Aquifers)
- SGRA - (Significant Groundwater Recharge Area)

NOTE: This Appendix does not form part of this Plan and is provided for information purposes only.



## Reference

Disclaimer: These digital mapping products have been produced on the County of Lambton's Geographic Information System. Data provided herein is derived from sources with varying levels of accuracy and currency. This is not a survey product. The County of Lambton disclaims all responsibility for the accuracy or completeness of information contained herein. The County of Lambton assumes no responsibility for errors arising from use of these digital mapping products.

The Official Plan information contained herein is current as of the last recorded amendment noted under "Official Plan Amendments".

NOTE: This Appendix does not form part of this Plan and is provided for information purposes only.

- Cadastral database is current to November 2022.

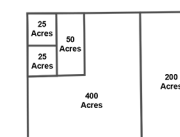
Projection: UTM NAD 83 Zone 17

Consultant: NPG Planning Solutions, November 2023.

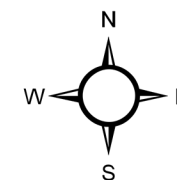
COUNTY OF LAMBTON  
Planning and Development Services, November 2023.

www.lambtononline.ca

### Area Estimator



Notes: Area Estimator generalized blocks (shown at left) are scaled to represent typical area measures.  
Acre area measures can be converted to hectares (ha) by dividing by (2.471).



## Municipality of Brooke-Alvinston OFFICIAL PLAN APPENDIX 3 Source Protection Plans

to By-law No. 53 of 2023

Passed this 23 day of November, 2023

David Ferguson, Mayor

Janet Denkers, Clerk-Administrator

## Appendix Amendments

xx

