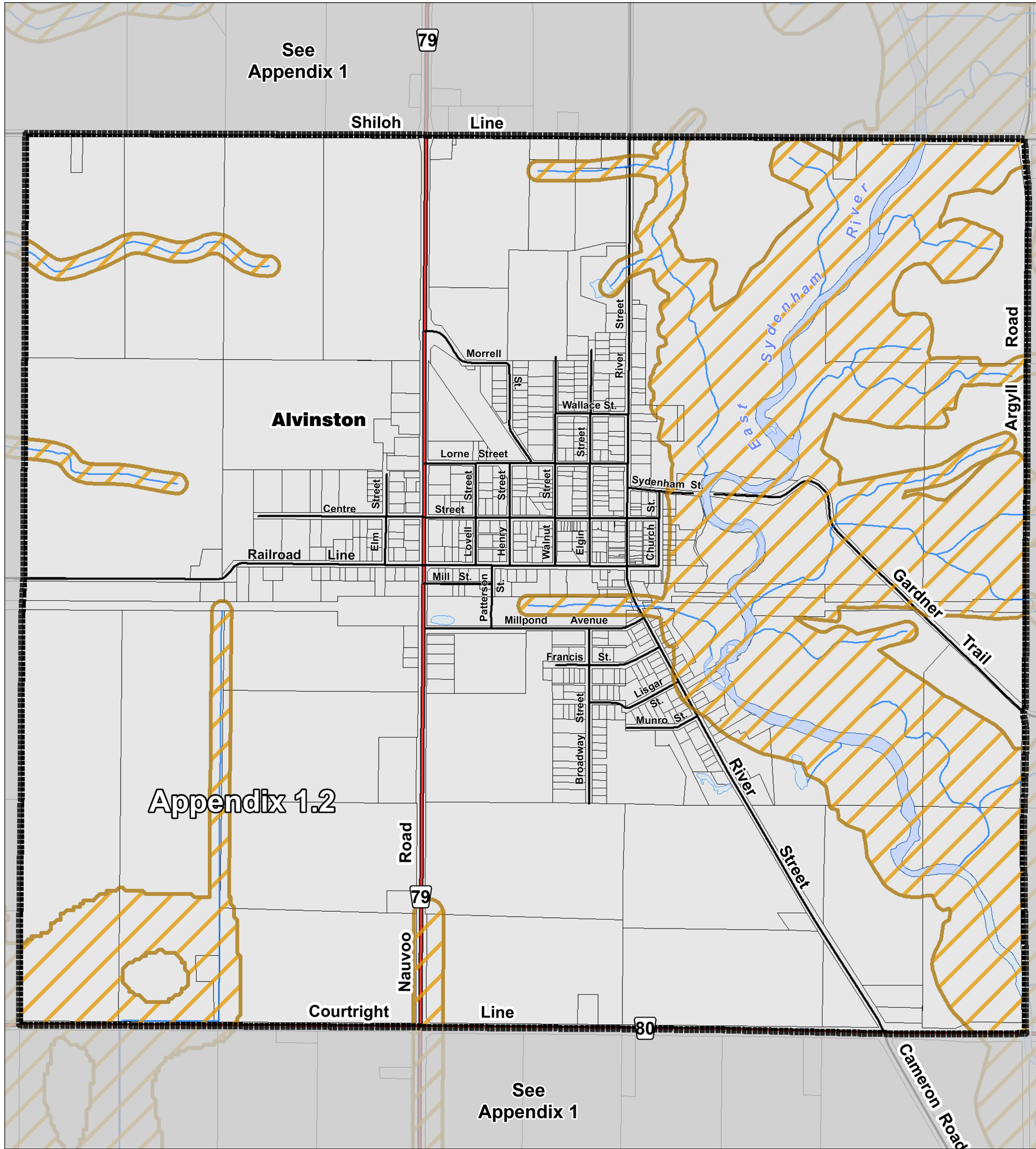


Municipality of Brooke-Alvinston OFFICIAL PLAN APPENDIX 1.2 Conservation Authority Regulated Areas (Alvinston)

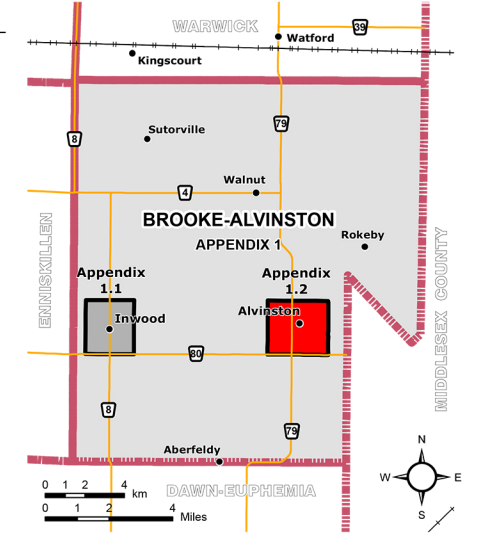


LEGEND

- Assessment Parcels
- Rivers - Streams - Drainage
- Roads
- County Roads
- Waterbodies
- Municipal Boundary
- Schedule Inset Boundaries ("Part 1" "Part 2")

Thematic Legend

- Areas Affected by Regulation (Conservation Authority Regulation 171/06)



Reference

Disclaimer: These digital mapping products have been produced on the County of Lambton's Geographic Information System. Data provided herein is derived from sources with varying levels of accuracy and currency. This is not a survey product. The County of Lambton disclaims all responsibility for the accuracy or completeness of information contained herein. The County of Lambton assumes no responsibility for errors arising from use of these digital mapping products.

The Official Plan information contained herein is current as of the last recorded amendment noted under "Official Plan Amendments".

- Cadastral database is current to November 2022.
- Hazard Areas are determined by local Conservation Authorities and are Subject to Change.

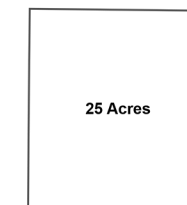
Projection: UTM NAD 83 Zone 17

Consultant: NPG Planning Solutions, November 2023.

COUNTY OF LAMBTON
Planning and Development Services, November 2023.

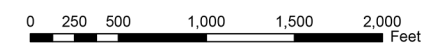
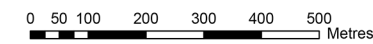
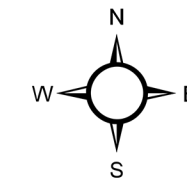
www.lambtononline.ca

Area Estimator



Notes: Area Estimator generalized blocks (shown at left) are scaled to represent typical area measures.

Acre area measures can be converted to hectares (ha) by dividing by (2.471).



Municipality of Brooke-Alvinston OFFICIAL PLAN APPENDIX 1.2 Conservation Authority Regulated Areas (Alvinston)

to By-law No. 53 of 2023

Passed this 23 day of November, 2023

David Ferguson, Mayor

Janet Denkers, Clerk-Administrator

Appendix Amendments

xx

